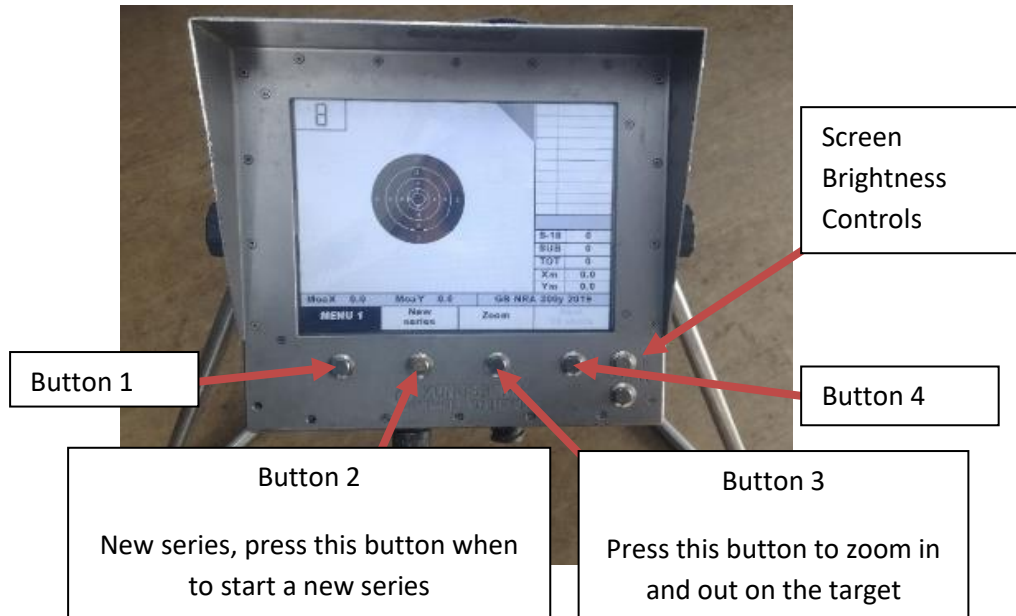


Kongsberg User Guide

IMPORTANT! Before commencing shooting ensure your rifle is calibrated for the correct distance, failure to do so may lead to damage to the equipment, non-refundable loss of shooting time and charges.

The Kongsberg system is used at 100, 200 and 300 yards. When you arrive at the firing point the monitor will be set up for the correct distance and you may commence shooting when ready.



Troubleshooting:

Please be as accurate as possible when relaying information to range control regarding help needed or system errors. This will allow them and/ the electronics technicians to resolve your queries efficiently and have you shooting as soon as possible.

- 1) **Sensor Error:** In the event of a sensor losing connection the monitor will display an error message and an arrow indicating which sensor. Please contact range control to inform them of the message and sensor, and an electronics technician will attend you as soon as possible to resolve the issue.
- 2) **Resetting the Monitor:** If the screen has frozen, or if asked to by range control via the radio, it may be necessary to reset the monitor. To do this, press and hold buttons 1 & 4, (labelled above), simultaneously. The monitor will then go dark before moving through loading screens. Next is a distance select menu, highlight the required distance then press the OK button. When the screen reads "Insert Card" press login which will return you to the shooting screen.
- 3) **Other Issues:** If you encounter any other issues with the system, particularly if you had 2 or more shots with no registration, please contact range control and an electronics technician will attend you as soon as possible. The system will not indicate if other parts of the system have been damaged other than the sensors, and continuing to shoot may cause excess damage that you will be charged for.

(N.b. the system will only record rounds that are supersonic at the point of impact on the target)